

NO.	BACKWATER CO.	FG-PGA	FT-FTA	REB	P	TP	A
32	SUE MONARCH	2-6	0-0	4	1	4	0
14	JACKIE OWENS	4-14	3-4	14	5	11	1
15	RITA MATTHEWS	3-7	4-4	9	3	10	1
21	SUE PRATHER	2-13	0-0	5	4	4	0
12	MARY ARMES	2-11	0-0	3	5	4	0
24	CAROL MARTEN	1-5	3-4	5	0	5	2
33	AMY OWENS	0-1	0-0	3	0	0	0
31	QUEOLA BURCH	0-0	0-0	0	0	0	0
30	SHARON BOARD	0-0	0-0	0	0	0	0
23	CATHY MATTHEWS	1-1	0-0	2	0	2	0
34	MARY PETRY	0-1	0-0	1	0	0	0
		-	-				
		-	-				
		-	-				
		-	-				
		-	-	10.B.			
<b>TOTALS</b>		15-59	10-12	47	18	40	4

PERCENTS 25.4 83.3 2 TEAM REBOUNDS (NOT IN TOTAL)

NO.	CLARK COUNTY	FG-PGA	FT-FTA	REB	P	TP	A
45	SENETA ROSE	3-8	0-2	4	0	6	0
32	KANDI PRUITT	0-4	0-0	8	3	0	1
40	SHARON MARTEN	6-14	0-3	17	2	12	1
23	LISA COLLINS	0-2	0-0	0	1	0	0
42	SALLY WALLEY	7-16	1-3	8	3	15	5
43	DAPHNE HARLOW	5-12	4-6	2	1	11	1
25	LEE ANN PRESTON	0-0	0-0	0	0	0	0
24	LARIANA RUTZ	0-0	0-0	0	0	0	0
53	CHRISTINE SCHULTZ	0-0	0-0	0	0	0	0
		-	-				
		-	-				
		-	-				
		-	-				
		-	-				
		-	-				
<b>TOTALS</b>		21-56	5-11	39	10	47	8

PERCENTS 37.5 35.7 2 TEAM REBOUNDS (NOT IN TOTAL)

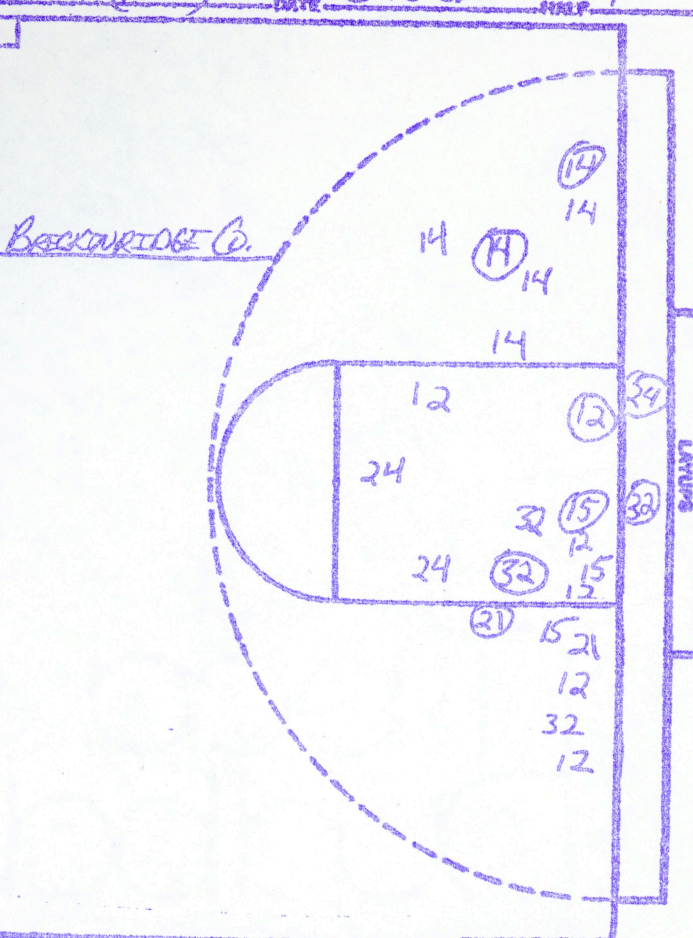
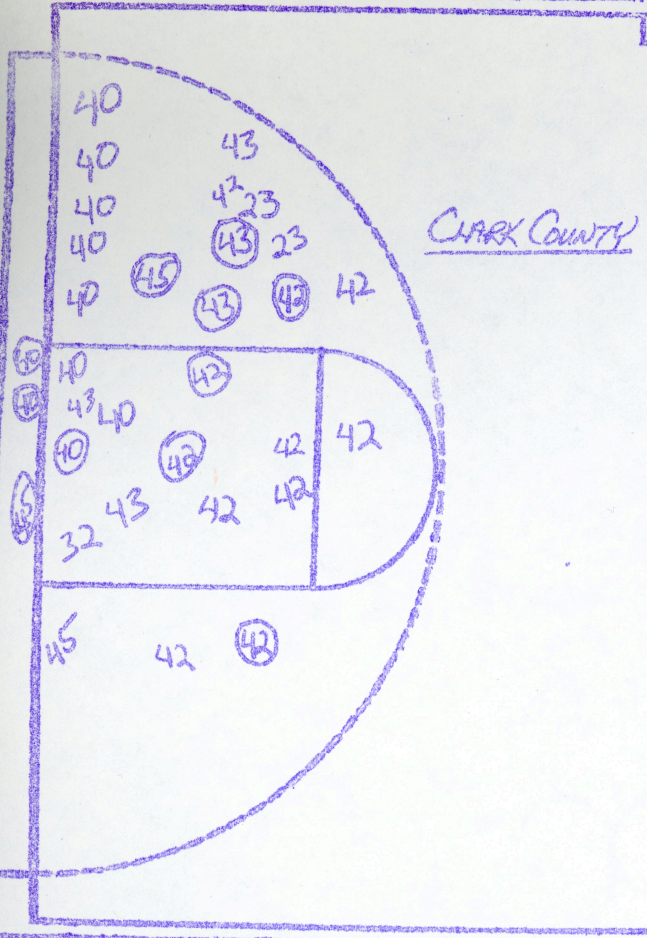
SCORE BY CHAS  
BACKWATER COUNTY  
 8-10-10-12 = 40  
 OFFICIALS: JIM BAKER & WILSON SEARS  
 ATTENDANCE: SESSION FOUR EST. 3,700

CLARK COUNTY  
 9-14-11-10 = 47



TURNOVERS

40:32
38:32
37:32
42:15
45:12
43:14
7:14
8:14
9:21
10:32
11:14
22
23
34
35
36
37
38



NO.	CLARK COUNTY	FG-FGA	FT-FTA	RB	P	TP	A
45	SELETA ROSE	2-3	0-0	0	0	4	0
32	KANDI PROFITT	0-1	0-0	4	0	0	0
40	SHARON MARTIN	3-9	0-2	9	0	6	0
23	LISA COLLINS	0-2	0-0	0	1	0	0
42	SALLY MALLEY	4-11	1-2	5	1	9	3
43	DAPHNE HARMON	2-6	0-0	0	0	4	1
		-	-				
		-	-				
		-	-				
		-	-				
		-	-				
		-	-				
		-	-				
		-	-				
TOTALS		11-32	1-4	18	2	23	4

NO.	BRECKENRIDGE CO.	FG-FGA	FT-FTA	RB	P	TP	A
32	SUE MONARCH	2-4	0-0	4	0	4	0
14	JACKIE OWENS	2-7	2-2	8	2	6	1
15	BETA MATTHEWS	1-3	0-0	4	2	2	1
21	SUE BRATHER	1-2	0-0	1	0	2	0
12	MARY ARMES	1-6	0-0	1	2	2	0
24	Carol Martin	1-3	0-0	3	0	2	0
		-	-				
		-	-				
		-	-				
		-	-				
		-	-				
		-	-				
		-	-				
		-	-				
		-	-				
TOTALS		8-25	2-2	21	6	18	2

PERCENTS 34.1 25.0 1 TEAM REBOUNDS (NOT IN TOTAL)

PERCENTS 32.0 100.0 1 TEAM REBOUNDS (NOT IN TOTAL)

CLARK COUNTY  
 SCORE BY *Blas*  
 OFFICIALS: JAN BAKER & NELSON SEARS  
 ATTENDANCE: SESSION FOUR

BRECKENRIDGE COUNTY  
 8-10=18